

Stock Code: **20120LEDDMG-BL**

Collection: Marino

**PRODUCT INFORMATION**

Base: 20120 Parent: 20120LEDDMG  
Mounting Type: Wall UPC: 641594241068  
Finish: Black  
Diffuser: N/A

**PRODUCT MEASUREMENTS**

<b>FIXTURE**</b>	<b>BACKPLATE / CANOPY**</b>
Length:	Length
Width: 4.75"	Width:
Diameter	Diameter: 4.75"
Height: 8"	Height: .8"
Extension: 4.75"	
Overall Height:	

**TECHNICAL SPECIFICATIONS**

**SPECIFICATIONS**

Frame Material: Steel	
Diffuser Material: N/A	
Lamping Type: SSL (Dedicated LED)	Jbox: Standard
Lamping Base: SSL	Lamp Wattage: 6 W
Lamp Quantity: 2	Total Wattage: 12 W
Voltage: 120v	Lamps Included: Yes

**QUALIFICATIONS**

Location Rating Wet  
 Certification: ETL (US/Canada) Listed  
 ADA Compliant: No Energy Star: No  
 JA8 Compliant: Outdoor Only Emergency Lighting: No  
 Marine Grade Finish: Yes  
 Warranty\*\*: 5 Year

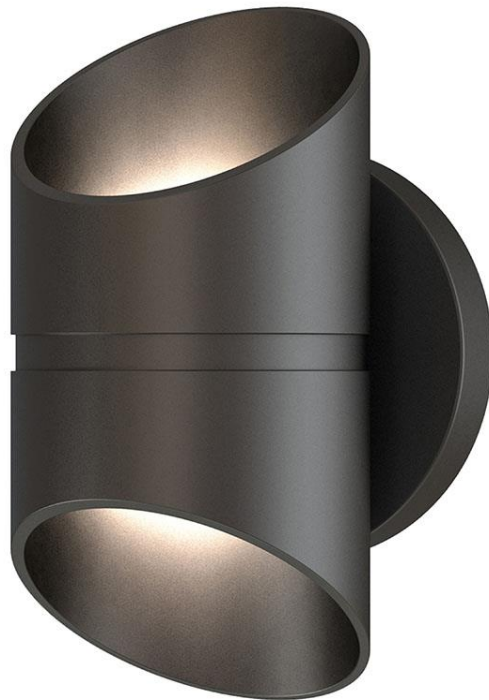
**PHOTOMETRICS**

Dimmable: Yes	Nominal Lumens: 1200 Lm
CRI: 90	Delivered Lumens: 612 Lm
CCT: 3000K	
Recommended Dimmers:	
(TRIAC)LEVITON Decora Sureslide 6672; (ELV)LUTRON Maestro MAELV-600; (ELV)LUTRON Maestro CL MACL-153M	

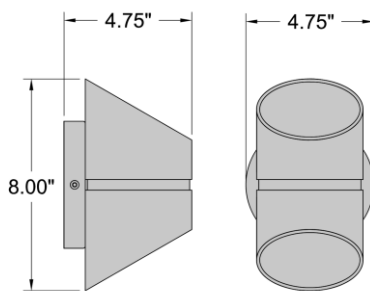
**ADDITIONAL NOTES**

Bi-Directional Light Source; Optional Color Tempature 100 Piece Minimum Order Quantity; Custom Finish 100 Piece Minimum Order Quantity

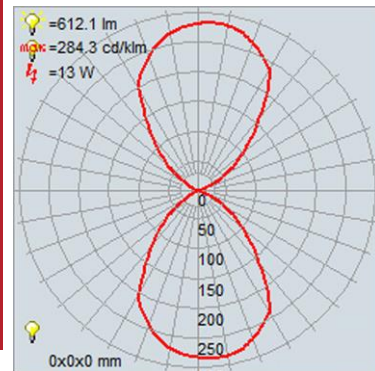
Project Name: \_\_\_\_\_  
 Location: \_\_\_\_\_  
 Type: \_\_\_\_\_  
 Quantity: \_\_\_\_\_  
 Notes: \_\_\_\_\_



**LINE DRAWING**



**IES FILE**



In addition to Access Lighting's purchase and warranty terms and conditions, by signing below or placing an order, you agree that you are authorized to bind the entity placing any order and acknowledge the following: All of sizes and measurements are approximate and all images are for illustrative purposes only. In the event of an inconsistency, the "Product Measurements" section controls. There also may be slight differences in the colors and designs compared to the displayed and printed images.

Signature: \_\_\_\_\_

Print Name \_\_\_\_\_ Date: \_\_\_\_\_

**Toll Free 800-828-5483 www.AccessLighting.com**

301 Piedmont Grove Park, Suite A, Greenville, SC 29611

